



FACILITATION
FORESIGHT
STRATEGY

ACCESS TO CARE POLICY SUMMIT: WASHINGTON, DC

GW Cancer Institute

THE GEORGE WASHINGTON UNIVERSITY

Washington, DC

May 11, 2015

Access to Care Policy Summit 2015



Nearly 60 members of the health care community, including government, insurers, providers, universities, advocates and non-profits met in Washington DC for a one-day workshop to create a shared action plan to improve access to cancer care in DC. A participant list is included in Appendix 1.

Special Thanks to Our Meeting Sponsors

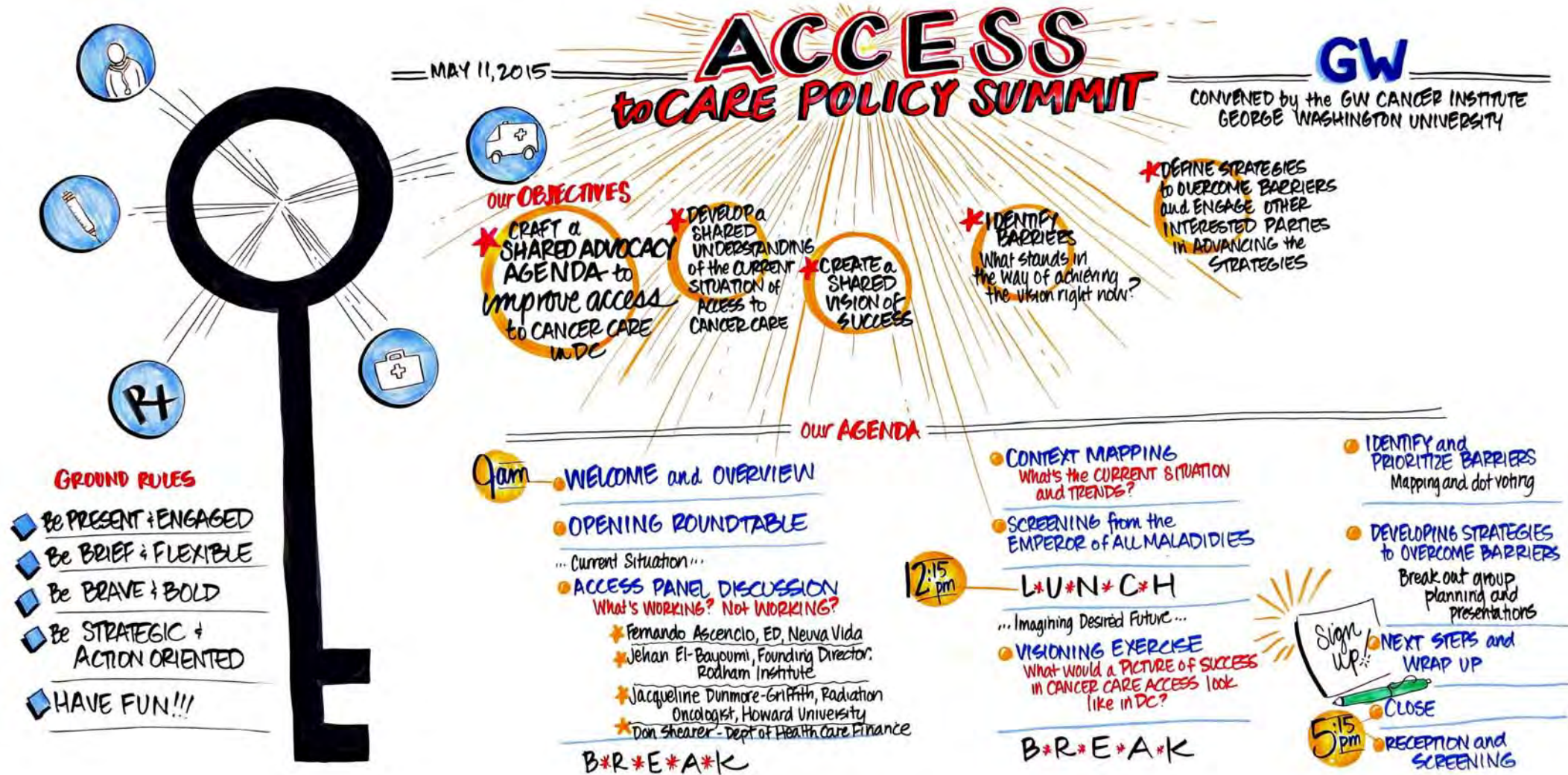


Welcome



Mandi Pratt-Chapman, Director of the George Washington University Cancer Institute, welcomed participants and noted attributes of the group that contribute to a powerful dialogue.

Meeting Start Up



The facilitator, Robert Mittman, oriented participants to the agenda.

Access Panel Discussion - What's Working and Not Working?

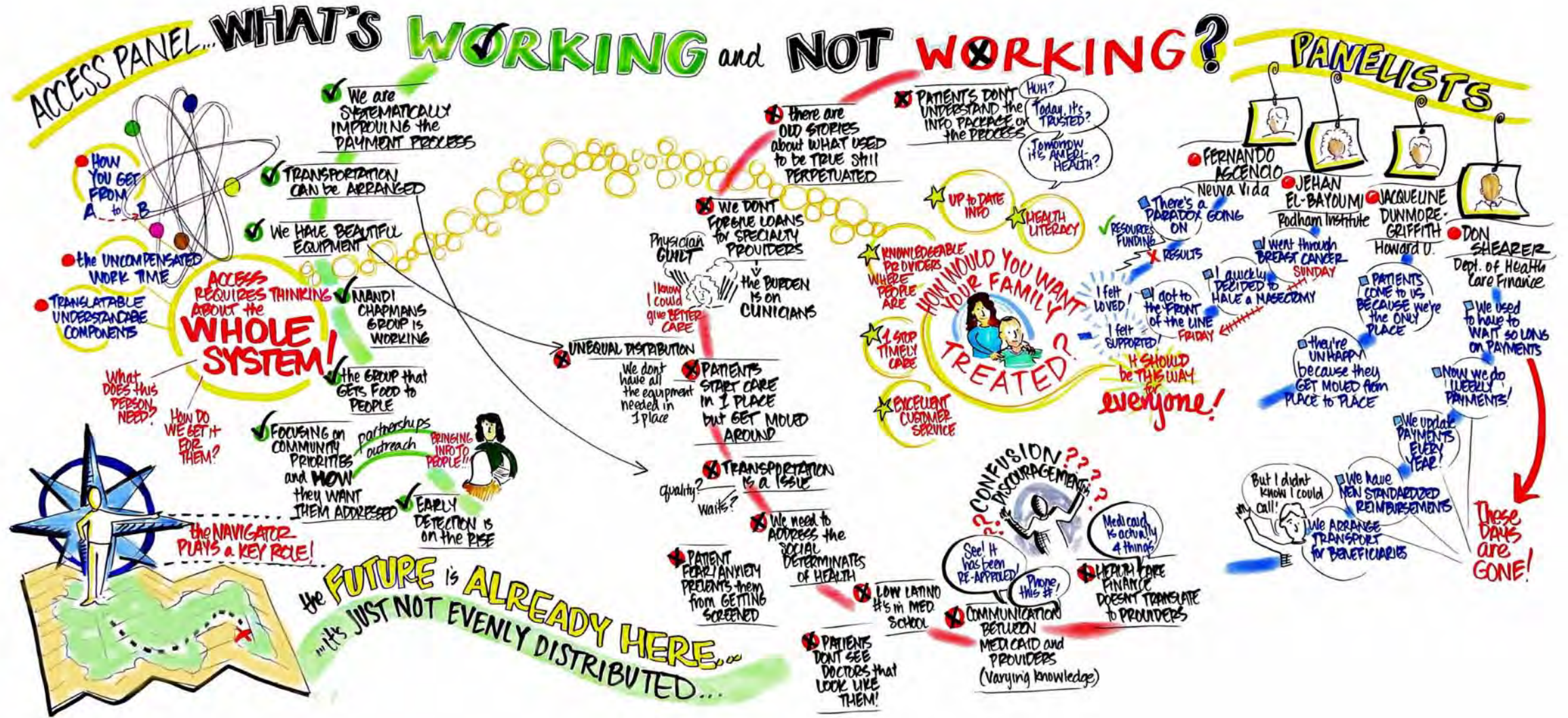
To create a shared understanding of the current context, panelists gave brief presentations on the patient experience as people try to obtain necessary screening, diagnosis, treatment and post-treatment care. Panelists included:

- Fernando Ascencio, Executive Director of Neuva Vida
- Jehan (Gigi) El-Bayoumi, Founding Director, The Rodham Institute and internist
- Jacqueline Dunmore-Griffith, radiation oncologist, Howard University
- Don Shearer, Department of Health Care Finance

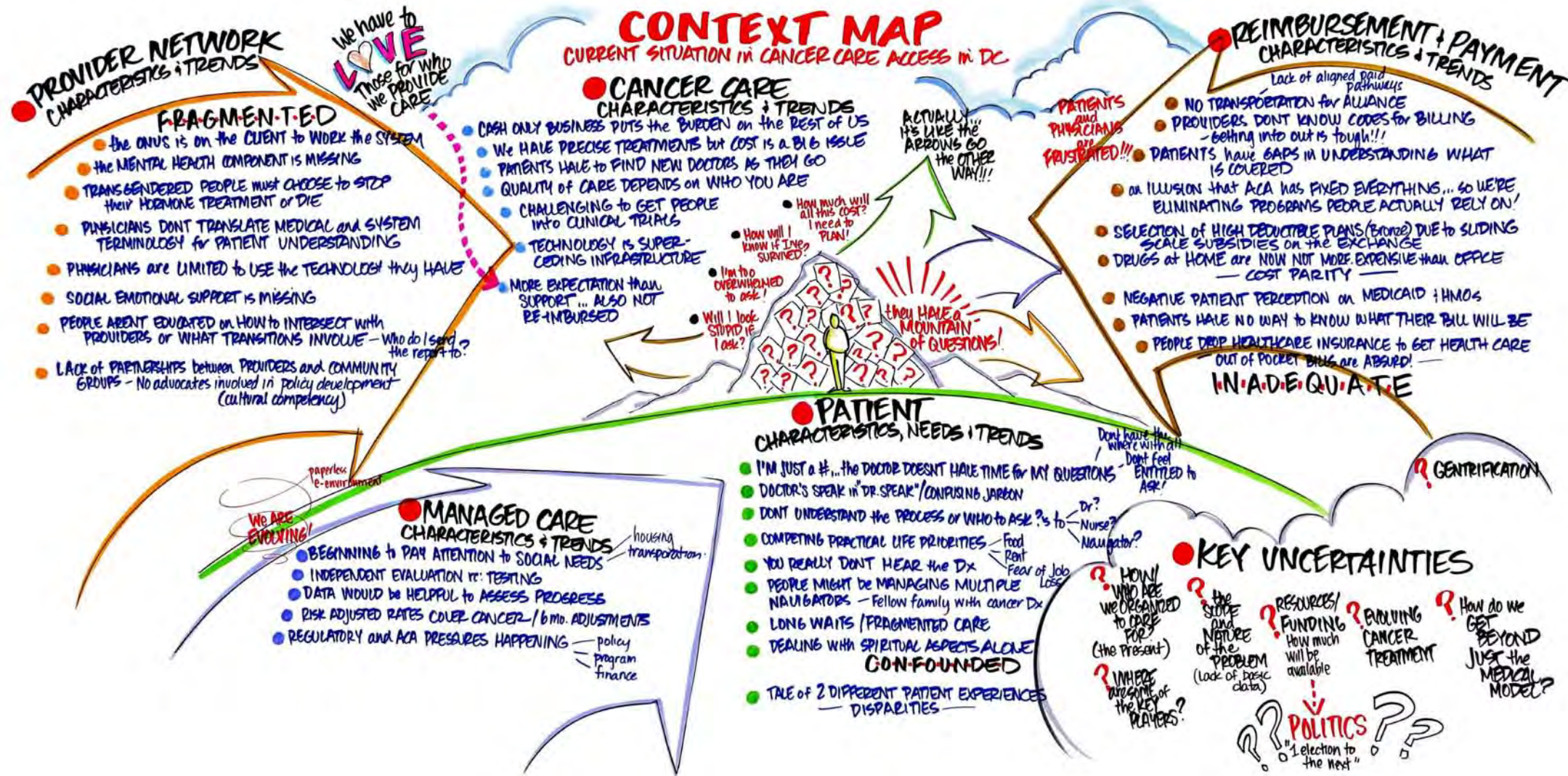
A brief group discussion followed to also hear participants' perspectives (see page 7).



Current Access to Cancer Care - What's Working and Not Working?

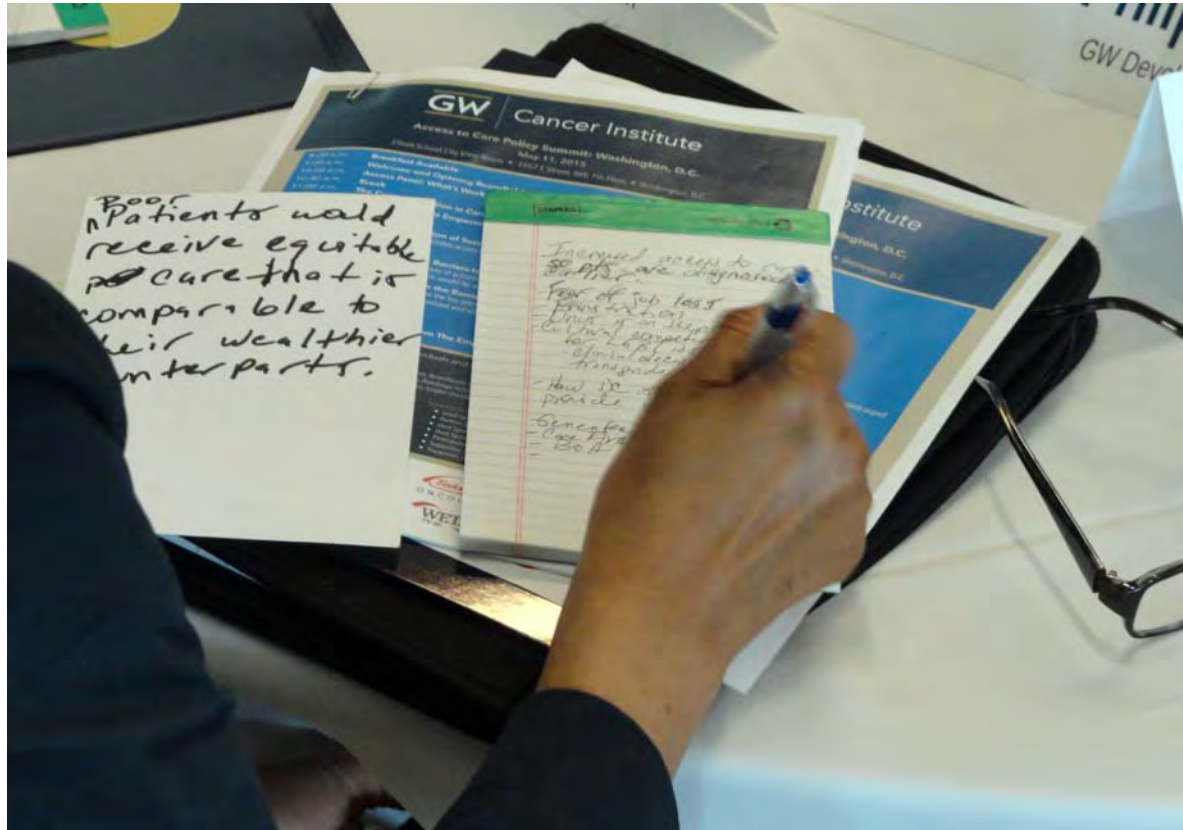


The Current Situation in Cancer Care Access in Washington, DC



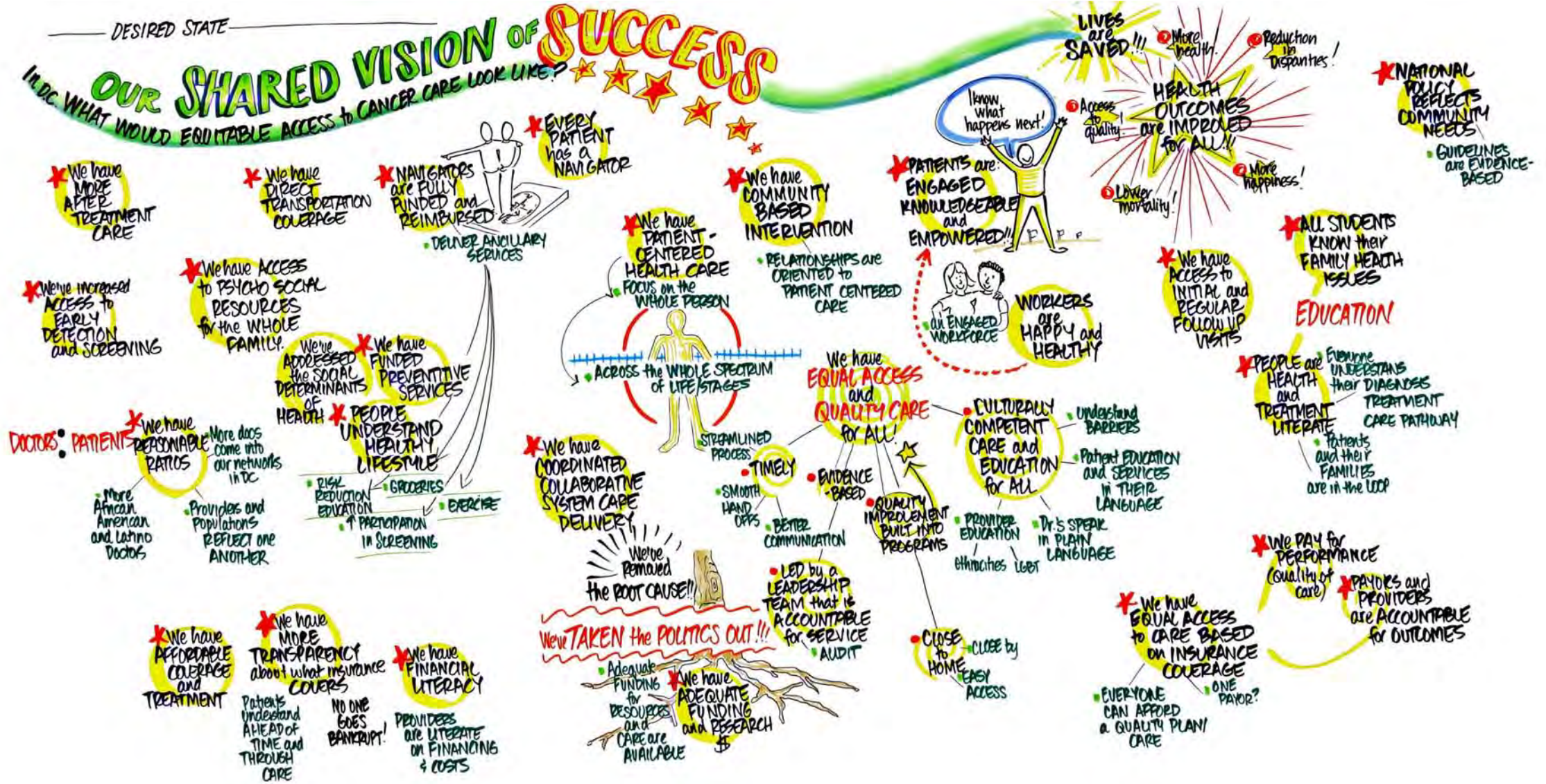
Next, the group worked together to map the current situation and trends in access to cancer care.

Creating a Shared Vision of Success



With a shared understanding of the current situation, the group shifted their attention to the future. On index cards, they brainstormed responses to the question, "If we were completely successful in improving access to cancer care in DC, what would that look like?" Ideas were then clustered and synthesized into a shared future vision (see page 10). Photos of the card clusters are shown in Appendix 2.

Our Shared Vision of Success

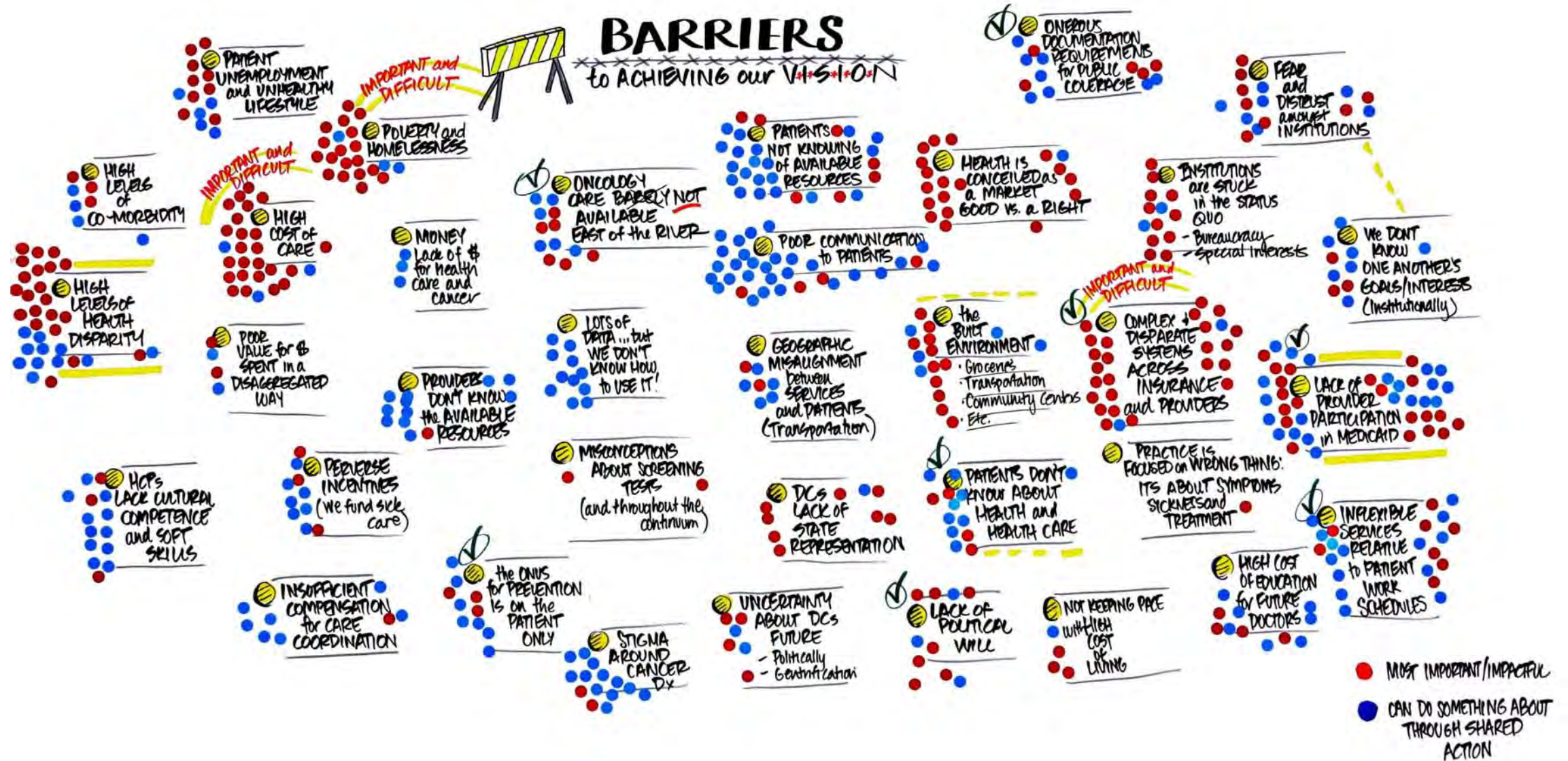


Identifying and Prioritizing Barriers to Achieving Our Vision



The group brainstormed obstacles that stand in the way of achieving the shared vision of access to cancer care. Using dots, they prioritized those barriers identifying the top ones, which if mitigated, would have the biggest impact on achieving the vision and which would be easiest to address through shared action (see page 12).

Barriers to Achieving Our Vision



Moments of Conversation Over Lunch



Action Planing to Overcome Barriers



For the remainder of the afternoon, table groups selected a barrier and co-created strategies/action plans to overcome it. Action plans considered what success would look like, metrics, critical factors that must be in place, and who must be involved to carry the work forward.

Action Plan Report Back and Closing

Table groups presented back to the group, making a compelling case about the significance of addressing their chosen barrier and the single most important thing the group can do to overcome it. Presenters also urged participants towards joint follow-up action.

To close the day, both Robert and Mandi thanked participants for the progress made during the day. Mandi described next steps from the meeting and remarked that this group is uniquely situated to carry these strategies forward. Participants were also given the opportunity to sign up for continued engagement on the strategies.



Appendix 1 - Access to Care Policy Summit 2015 Participants

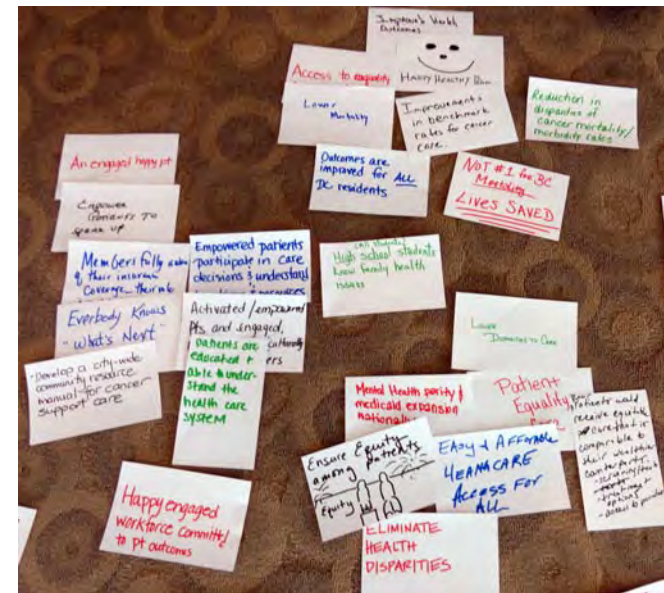
Summit participants included:

- Andrea Anderson, Family Physician, Unity Health Care
- Fernando Ascencio, Executive Director, Nueva Vida
- Kadija Ash, Survivor/Program Support Specialist, Cancer Programs Division, Department of Health
- Regina Baker, Social Worker, Unity Health Care
- Ferne Barrow, Senior Director, Outreach and Community Engagement WETA
- Beth Beck, Co-Founder, President/CEO, Breast Care for Washington
- Kim Beer, Policy Director, Susan G. Komen
- Tesha Coleman, Patient Navigator, Georgetown University Hospital
- Rebecca Cowen's-Alvarado, Vice President, Health Systems, American Cancer Society
- Falasha Culpepper, Independent Consultant
- Margaret Darling, Research Assistant, The Brookings Institution
- Deanna Darlington, Senior Director, Government Affairs, Amgen Oncology
- Thomas Duncan, Chief Executive Officer, Trusted Health Plan
- Jacqueline Dunmore-Griffith, Radiation Oncologist, Howard University Hospital
- Gigi El-Bayoumi, Founding Director, The Rodham Institute
- Kimberly Fox, Director of Direct Community Benefit Investments, Finance and Compliance, Kaiser Permanente
- Diana Garcia, Patient Navigator, GW Cancer Institute
- Maria Garcia, Survivor
- Elizabeth Glidden, Patient Navigator, ACS/GW Cancer Institute
- Rob Goldsmith, Director, Policy and Advocacy, Cancer Support Community
- Rhonique Harris, Chief Medical Officer, Health Services for Children with Special Needs
- Adrian Hawkins, Diversity Relations, Novartis Oncology
- Constanza Hege, Survivor
- Elizabeth Hoffler, Senior Director, Prevent Cancer Foundation
- Stephen Jefferson, Survivor/Outreach Specialist, Community Wellness Alliance
- Thelma Jones, Survivor/Patient Navigator
- Rana Kianni, Technical Director, GW Hospital

Access to Care Policy Summit 2015 Participants (continued)

- Anita Lewis, Project Manager, Department of Health Care Finance
- Barry Lewis, Associate Medical Director, Medstar Family Choice-DC
- Gary Little, Medical Director, GW Hospital
- Jackie Nagawa, Patient Navigator, African Women's Cancer Awareness Association
- Amari Pearson-Fields, Chief, Cancer Programs Division, DC Department of Health
- Bonita Pennino, Government Relations Director, American Cancer Society
- Bathsheba Philpott, Director, Institutional Giving, GW Development and Alumni Relations
- Mandi Pratt-Chapman, Director, GW Cancer Institute
- Carmen Radke, Survivor
- Sybil Richard, Director of Coverage and Reimbursement Policy, American Society of Clinical Oncology
- Eva Ruiz, Patient Navigator, GW Medical Faculty Associates
- Kim Ryan, Director, Hospital Partnerships, Cancer Support Community
- Donald Shearer, Director, Health Care Operations Administration, Department of Health Care Finance
- Valeta Smith, Survivor
- Cherie Spencer, Senior Program Manager, Howard University Hospital
- Citseko Staples, Senior Specialist, American Cancer Society Cancer Action Network
- Jennifer Stewart, Patient Navigator, DC Department of Health Shelly Ten Napel, Director, Health Care Reform and Innovation Administration, Department of Health Care Finance
- Adrienne Thomas, Project Manager, Community Outreach and Patient Navigation, GW Cancer Institute
- Shyrea Thompson, Senior Advisor to the CEO for Special Initiatives, Susan G. Komen
- Lisa Truitt, Director, Health Care Delivery Management Administration, Department of Health Care Finance,
- Crystal Velasco, Research and Evaluation Coordinator, Nueva Vida
- Lesley Wallace, Associate Vice President, Regulatory Affairs, Network Development and Marketing, Medstar Family Choice
- Lukeshia Walker, Provider Relations Specialist, Trusted Health Plan
- Anne Willis, Director, Patient-Centered Programs, GW Cancer Institute
- Lori Wilson, Oncology Surgeon, Howard University Hospital
- Feseha Woldu, Associate Vice President of Clinical Affairs and Quality, Howard University
- Constance Yancy, Program Manager, Division of Managed Care, Department of Health Care Finance
- Yuqing Zhang, Research Assistant, GW Cancer Institute

Appendix 2 - Shared Vision Brainstorm Clusters



Shared Vision Brainstorm Clusters

