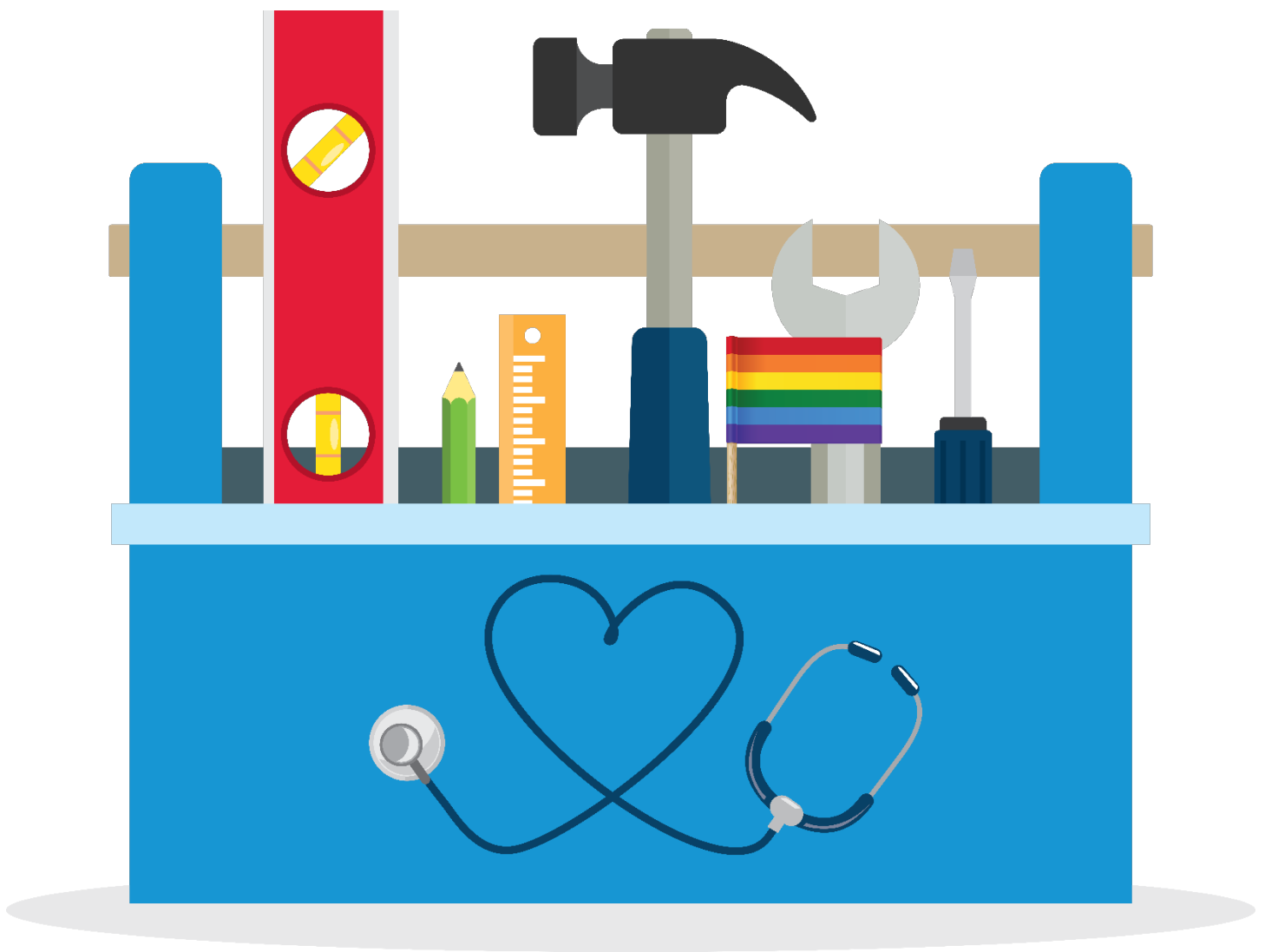


Health Equity Toolbox:

Resources to Foster Cultural Sensitivity and Equitable Care for All



Health Equity Toolbox:

Resources to Foster Cultural Sensitivity and Equitable Care for All

CONTENTS

About This Toolkit	2
Who Should Use This Toolkit?	2
Reducing Health Disparities.....	2
TEAM: Together, Equitable, Accessible, Meaningful	2
Social Media 101	3
Twitter Best Practices	3
Measuring Success.....	3
Resources for Patients.....	4
Resources for Providers.....	9
References.....	13

Tip: Viewing this PDF in Google Chrome? Use "Ctrl+Click" on links to open them in a new tab.

This research and education project is supported by the Pfizer Foundation. Contents are solely the responsibility of the authors and do not necessarily represent the official views of Pfizer Foundation.

ABOUT THIS TOOLKIT

Are you looking for resources to promote health equity and culturally sensitive care? This toolkit can help! It's designed to help stakeholders establish a social media strategy, manage social media accounts, implement best practices for health communication, disseminate health equity resources and evaluate social media efforts.

WHO SHOULD USE THIS TOOLKIT?

Public health professionals, cancer control professionals, coalitions, community-based organizations and other stakeholders can all use this toolkit and adapt its messaging for their unique audiences and areas of expertise.

REDUCING HEALTH DISPARITIES

It is important to share health education resources for diverse populations. Cultural background significantly impacts the lens through which we view health information. According to the Centers for Disease Control and Prevention (CDC), "effective communication recognizes and bridges cultural differences" (CDC, 2018). While communication is not a cure-all for reducing cancer-related health disparities, it can serve as one important tool in an overall strategy to address health inequities.

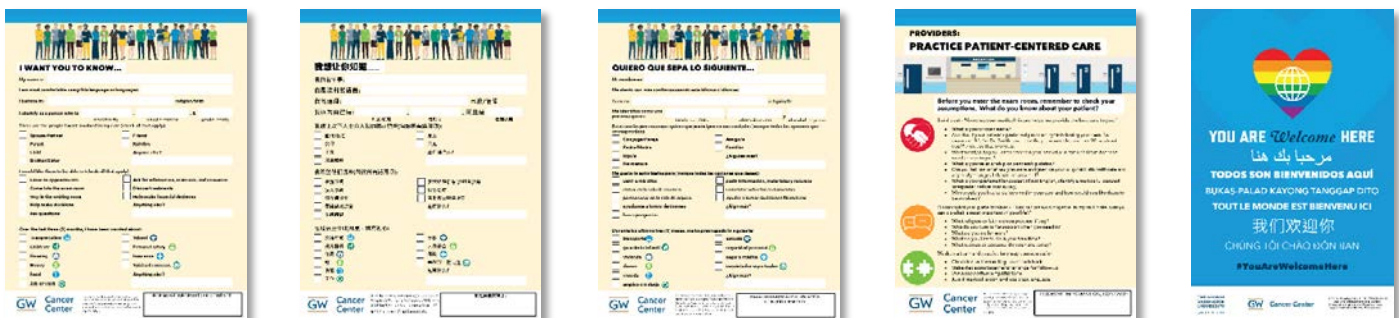
TEAM: TOGETHER, EQUITABLE, ACCESSIBLE, MEANINGFUL

The [Together, Equitable, Accessible, Meaningful \(TEAM\)](#) education program at the GW Cancer Center aims to improve patient-provider interactions through the promotion of equitable, accessible and patient-centered care that results in better health outcomes for those impacted by cancer.

We created this toolkit to promote resources that help patients and caregivers impacted by breast and other cancers to identify providers who are culturally sensitive, improve their health literacy and engage in shared decision-making. This toolkit is also designed to promote resources that help health care providers, administrators and other professionals support patient engagement, enhance patient-provider communication and engage in culturally sensitive practices.

As a part of the TEAM education program, we've created several resources for patients and providers that can help patients talk with members of their health care team and remind providers about best practices for culturally affirming care. These resources include:

- [I Want You to Know Patient Card](#) - Versions available in English, Spanish and Chinese (simplified)
- [Practice Patient-Centered Care Poster](#) - Versions available with and without GW Cancer Center logo
- [You Are Welcome Here Poster](#) - Versions available with and without GW Cancer Center logo



All resources mentioned in this toolkit are available for download from the [Cancer Control Technical Assistance Portal \(TAP\) Resource Repository](#). You can also check out our resources on Twitter by following the hashtag [#TAPResource](#).

Looking for more in-depth info on social media channels and communication strategy? Check out our [Media Planning and Media Relations Guide](#) or our other [social media toolkits](#).

SOCIAL MEDIA 101

According to a 2016 Pew Research Center survey, “69% of online adults use social networking sites.” (Pew Research Center, 2017). In addition, a 2014 study found that nearly 75% of adults use social media to discuss health (Fox, 2014). Social media represent a unique opportunity to reach a large audience of both consumers and professionals. It is more important than ever that online medical and health information is “trustworthy, engaging, and accessible to digitally empowered consumers” (Hootsuite, n.d., p. 2).

When designing and thinking about your social media strategy, consider your audience, the channel(s) you want to use, your objective(s), or what you are trying to achieve, as well as how you will measure success. Remember that your social media activities should ultimately support your organization’s goals (Hootsuite, n.d.).

Looking to establish a social media strategy for your organization or make the case for why it’s important? CDC offers [social media tools](#) to create and establish a social media strategy. The site also offers guidelines and best practices as well as evaluation strategies, tools and templates.

TWITTER BEST PRACTICES

- Keep Tweets short, between the 280 character limit. This allows other users to Retweet while adding their own comments.
- Add photos or videos. Adding a photo boosts Retweets by 62% on average (Twitter Government and Elections Team, 2014).
- Tweet at author or organizational Twitter handles when possible. Note that Tweets that begin with a username will now reach all your followers, but they will be categorized as “replies.” If you want the Tweet to be seen on your timeline, use the “.@” convention at the beginning.
- Twitter, Tweetdeck, Sprout Social and Hootsuite all have options to shorten links as you write Tweets.
- Promote engagement with other organizations by liking or Retweeting their content. You can even add your own comment before Retweeting.
- Be responsive and recognize Retweets, @ mentions and when others share your content. It doesn’t take much, but a simple “thank you” goes a long way toward building engagement.
- Remember that Tweets cannot be edited once they are posted, so proofread before you post!

MEASURING SUCCESS

Looking to measure the success of your social media campaign? Twitter offers free analytic tools to allow you to demonstrate the impact of your social media efforts.

[Twitter Analytics](#) allows you to see and download detailed tracking information about Tweet activity, engagement, audience and trends over time. Log in to [analytics.twitter.com/about](#) with your Twitter username and password to learn more.

RESOURCES FOR PATIENTS

Publisher	Patient Resource	Tweets
'Imi Hale Native Hawaiian Cancer Network	Native Hawaiian Fact Sheets	These educational materials tailored to the Native Hawaiian community can help spread the word about cancer prevention. Share today: http://bit.ly/2pJpMMR #TAPResource
African American Breast Cancer Alliance	Black Women, Breast Cancer and Risk Factors	#BreastCancer is a major health concern for Black or African American women, but knowledge is power: http://bit.ly/2FftDHa #TAPResource
Agency for Healthcare Research and Quality	Is Lung Cancer Screening Right for Me?	Could lung cancer screening be right for me? This list of tools can help you start the conversation with your doctor: http://bit.ly/2IYI7gH #LCSM
American Cancer Society	Glossary: Definitions and Phonetic Pronunciations	Feeling overwhelmed by medical term pronunciations? A health care glossary can demystify things: http://bit.ly/2pKRSX8 #TAPResource
American Cancer Society	How to Choose a Doctor: Worksheet	Choosing a doctor is important. Let this guide from @AmericanCancer help you through the process: http://bit.ly/2FkIxE #TAPResource
American Cancer Society	How to Choose a Hospital: Worksheet	Choosing a hospital can be overwhelming. Use this guide from @AmericanCancer to help get the best possible medical care & treatment: http://bit.ly/2Fg6oRr #TAPResource
American Cancer Society	Questions to Ask Your Doctor When You Have Cancer	A #cancer diagnosis comes with a lot of questions, click here for suggestions on what to ask: http://bit.ly/2GgQDWu #TAPResource
American Cancer Society	Seeking a Second Opinion	Considering a second opinion about your treatment options? Learn more: http://bit.ly/2I702AG #TAPResource
American Cancer Society	The Doctor-Patient Relationship	Improve communication with your doctor using these tips: http://bit.ly/2DYWJsN #TAPResource
American Health Information Management Association	Preparing for a Doctor's Visit: A Reference Guide for Patients, Caregivers, and Advocates	Learn how to better prepare for a doctor's visit and have a more productive visit: http://bit.ly/2pLxMMh #TAPResource
American Society of Clinical Oncology	ASCO Care and Treatment Recommendations for Patients	Need care and treatment recommendations? Check out this resource from @cancerdotnet http://bit.ly/2I1Hr0j #TAPResource
American Society of Clinical Oncology	Cancer Terms: Cancer Basics Glossary	Take charge of your care by learning important medical terms: http://bit.ly/2GgRAOT #TAPResource
American Society of Clinical Oncology	Evaluating Cancer Information on the Internet	Learn how to assess #cancer info from the internet like a pro: http://bit.ly/2ulHVF7 #TAPResource

Publisher	Patient Resource	Tweets
American Society of Clinical Oncology	Understanding Cancer Research Study Design and How to Evaluate Results	Learn how research studies can benefit you with this resource from @cancerdotnet: http://bit.ly/2IVRlu9 #TAPResource
American Society of Clinical Oncology	Understanding the Publication and Format of Cancer Research Studies	Interested in understanding the publication and format of cancer research studies? This guide has you covered: http://bit.ly/2GurV8y #TAPResource
Apicha Community Health Center	Patient Resources	As a patient, you have rights. Learn how to exercise them with these resources from @APICHAHealth: http://bit.ly/2Ga9F57 #TAPResource
Cancer Treatment Centers of America	Glossary	Cancer-related terms can get confusing. Let this glossary take out the guesswork: https://ctcaho.pe/2piPLnr #TAPResource
CancerCare	"Doctor, Can We Talk?": Tips for Communicating With Your Health Care Team	Talking with your doctor can feel difficult. This guide from @cancercare can help you communicate with your health care team and improve your care: http://bit.ly/2H7aeZB #TAPResource
CancerCare	Communicating With Your Health Care Team	Having good communication with your health care team is important, but where do you start? Read more from @cancercare http://bit.ly/2FVGeQR #TAPResource
CancerCare	Coping with Cancer as an LGBT Person	A number of health disparities affect #LGBTQ communities. Click here to learn more: http://bit.ly/2pKgT4A #TAPResource #MinorityCancer
CancerCare	Questions to Ask Your Health Care Team	Asking questions is important throughout your cancer experience. Use this guide from @cancercare to help: http://bit.ly/2oKCg6m #TAPResource
CancerCare	When to Get a Second Opinion	When should you get a second opinion? Get more info from @cancercare: http://bit.ly/2oRTVYO #TAPResource
Centers for Disease Control and Prevention	Take Action to Lower Your Breast and Ovarian Cancer Risk (African American)	African American women, learn how to lower your risk for breast and ovarian cancer with @CDCgov: http://bit.ly/2Gc45iL #TAPResource
Centers for Disease Control and Prevention	Take Action to Lower Your Breast and Ovarian Cancer Risk (Jewish)	Interested in learning how to lower breast and ovarian cancer risk for Jewish women? Check out this infographic from @CDCgov: http://bit.ly/2ITCRLc #TAPResource
Dana-Farber Cancer Institute	Five Things Minority Women Should Know About Women's Cancers	As a woman of color, what are some things you should know about #cancer? Click here to find out: http://bit.ly/2unNtPn #TAPResource
EthnoMed	EthnoMed: Integrating Cultural Information Into Clinical Practice	@EthnoMedUW provides information and resources on minority and immigrant health. Learn more: http://bit.ly/2uon0kE #TAPResource

Publisher	Patient Resource	Tweets
The George Washington University Cancer Center	I Want You to Know Patient Cards	Looking to start a conversation with your doctor? These "I Want You to Know" cards can help (available in English, Spanish and Chinese): http://bit.ly/TEAMPatientCards #TAPResource #LGBTQ #MinorityCancer
The George Washington University Cancer Center	Living with Prostate Cancer: A Resource for Gay and Bisexual Men	Gay and bisexual men have health needs that are not often talked about. This fact sheet can help you start the conversation: http://bit.ly/MSMPrCaFactSheet #TAPResource #LGBTQ #ProstateCancer
The George Washington University Cancer Center	Living with Prostate Cancer: A Resource for Transgender Women	#DYK that transgender women and gender non-conforming individuals may have unique health concerns? This #ProstateCancer fact sheet can be a good place to start: http://bit.ly/TransPrCaFactSheet #TAPResource
GLMA: Health Professionals Advancing LGBT Equality	Find a Provider	Are you an #LGBTQ individual seeking a trusted health care professional? Find a provider: http://bit.ly/2GcdarR #TAPResource
GLMA: Health Professionals Advancing LGBT Equality	Top 10 Health Issues for Gay Men, Lesbians, Bisexuals and Transgender Persons	What are the top 10 issues/concerns in health care for the #LGBTQ community? Click to find out: http://bit.ly/2GaeWcV #TAPResource #MinorityCancer #LGBTQHealth
GLMA: Health Professionals Advancing LGBT Equality	Transgender Health Resources	Transgender patients often have unique health care concerns. This list of resources can help: http://bit.ly/2pFCoVe #TAPResource #LGBTQ
The Joint Commission	Speak Up	Learn how to speak with your health care team using this very helpful video series from @TJCommission: http://bit.ly/2GwX2Af
LGBT HealthLink	Healthcare Bill of Rights	What rights do #LGBTQ people have when going to see a health care provider? This resource from @LGBTHealthLink has the answers: http://bit.ly/2l9wzpi #TAPResource
Living Beyond Breast Cancer	Breast Cancer in Focus: Getting the Care You Need as a Lesbian, Gay or Bisexual Person	A helpful guide from @LivingBeyondBC for #LGBTQ individuals on how navigate the decision of coming out to your health care team: http://bit.ly/2GeLUod #TAPResource #BreastCancer
Living Beyond Breast Cancer	LGBT With Breast Cancer	Do you have a #BreastCancer diagnosis and identify as lesbian, gay, bisexual or transgender? Click here for helpful information and support: http://bit.ly/2Gh3zf2 #TAPResource #LGBTQ
Lung Cancer Alliance	Glossary	Unsure of a #LungCancer term? Learn more with this glossary from @LCAorg: http://bit.ly/2pJkIgT #TAPResource
National Cancer Institute	Dictionary of Cancer Terms	Need help defining a cancer term? This glossary from @theNCI can help: http://bit.ly/2l5HOzq #TAPResource

Publisher	Patient Resource	Tweets
National Cancer Institute	Understanding Breast Changes	Have you noticed changes in your breast or have questions about an abnormal mammogram? This guide from @theNCI is for you: http://bit.ly/2ITcBAK #TAPResource #BreastCancer
National Coalition for Cancer Survivorship	Cancer Survival Toolbox (Spanish)	A #cancer diagnosis can be difficult to navigate. Here's a program from @CancerAdvocacy that can help patients and families: http://bit.ly/2pMDMnZ #TAPResource
National Coalition for Cancer Survivorship	Communicating With Your Doctor	Need more info about communicating with your doctor? Find some here with @canceradvocacy http://bit.ly/2uxHuaC #TAPResource
National Coalition for Cancer Survivorship	Take Charge of Your Cancer Care...	Need guidance on navigating your #cancer care experience? These tools can help you take charge: http://bit.ly/2plQ95e #TAPResource
National Institute on Minority Health and Health Disparities	Cancer Resources in Multiple Languages	Here are some #cancer resources available in Spanish and Asian languages: http://bit.ly/2I7JgS0 #TAPResource
National LGBT Cancer Network	LGBT Cancer Information	Want more information about cancer care issues #LGBTQ patients face? Start here: http://bit.ly/2pJ0ZZ0 #TAPResource
National Medical Association	"You've Got the Power!" Clinical Trials Fact Sheet	You've got the power! Learn how you can get involved in clinical trials: http://bit.ly/2IUbHUA #TAPResource
Native American Cancer Research Corporation	Breast Health Fact Sheet	"I asked my doctor for the mammogram" - how Native American women can take charge of their breast health: http://bit.ly/2FVxA4R
Native American Cancer Research Corporation	Cervix Health Fact Sheet	"Cervical cancer knows no prejudice and affects Native American women just as it does others" - Learn more about cervical health: http://bit.ly/2oJgZJY #CervicalCancer #MinorityHealth
SHARE	Novela on Breast Cancer Survivorship	Learn more about #BreastCancer survivorship by following the story of Ivette and her experience with this novella from @SHAREing: http://bit.ly/2pKUvlu #TAPResource
SHARE	Ovarian Cancer Videos and Webinars	Looking for videos on breast and ovarian cancer related topics? Watch these: http://bit.ly/2utYdfe #TAPResource
Sibley Memorial Hospital	Health Care for Lesbian, Gay, Bisexual, Transgender and Queer Patients	Need more resources on health care for #LGBTQ individuals? http://bit.ly/2I85WSa #TAPResource #MinorityCancer
Sisters Network, Inc.	Breast Cancer Facts	African American women are diagnosed with #BreastCancer at a high rate. Learn more: http://bit.ly/2IVMQQh #TAPResource

Publisher	Patient Resource	Tweets
Sisters Network, Inc.	Breast Cancer Glossary	Need help defining cancer terms? Here is a glossary to help, click the link to be informed: http://bit.ly/2unNT8i #TAPResource
Sisters Network, Inc.	Key Questions to Ask Your Doctor	Don't know what to ask your doctor after a #BreastCancer diagnosis? This list of questions can help: http://bit.ly/2DZ5Vxa #TAPResource
Sisters Network, Inc.	Risk Factors on Breast Cancer	Learn about common risk factors for #cancer here: http://bit.ly/2GxLFYN #TAPResource
Susan G. Komen	Breast Cancer Glossary	Unsure of a #BreastCancer related health term? Learn more with this glossary from @SusanGKomen: http://sgk.mn/2GhxAM5 #TAPResource
Susan G. Komen	Educational Materials	Need more information to better understand a breast cancer diagnosis? Visit @SusanGKomen's educational materials catalog: http://sgk.mn/2I4GMET #BreastCancer #TAPResource
Susan G. Komen	Facts for Life: Lesbian, Gay, Bisexual and Transgender People	#LGBTQ communities may have unique concerns when it comes to breast cancer. This fact sheet from @SusanGKomen can help: http://sgk.mn/2tjPD20 #BreastCancer #TAPResource
Susan G. Komen	Facts for Life: Talking With Your Doctor	Learn how to prepare to talk with your doctor: http://sgk.mn/2I7Qwgl #TAPResource
Susan G. Komen	Komen Educational Videos (multilingual)	These videos from @SusanGKomen are available in multiple languages. They discuss common concerns and questions for women diagnosed with #BreastCancer: http://sgk.mn/2GajjQR #TAPResource
UCSF Medical Center	Breast Cancer Glossary	Have you or a loved one been diagnosed with #BreastCancer? This glossary of terms can help: http://bit.ly/2Gis4Zh #TAPResource
Young Survival Coalition	Breast Health and You: A Young Woman's Guide to Health	Did you know that nearly 13,000 cases of #BreastCancer in women under age 40 are diagnosed each year? Take charge of your health w/these resources: http://bit.ly/2Gwm6Yh #TAPResource
Young Survival Coalition	Educational Resources	Are you interested in learning how to advocate and take control of your health? Click here for valuable resources to help: http://bit.ly/2GjiMfy #TAPResource @

RESOURCES FOR PROVIDERS

Publisher	Provider Resource	Tweets
'Imi Hale Native Hawaiian Cancer Network	Reaching People in Multiple Languages	How do you reach patients in multiple languages? This useful tool can help you get started: http://bit.ly/2pJpMMR #TAPResource
AAPCHO	Health Center Board Self-Assessment Tool: Culture and Language Access	Providing culturally competent care is everyone's responsibility. Check out this online assessment for health care leaders: http://bit.ly/2pJoznM #TAPResource
Advocate Health Care	Religious Beliefs and Healthcare Decisions	#DYK your patient's religious beliefs can sometimes impact their health care decisions? Learn more: http://bit.ly/2GxJO6B #TAPResource
American Cancer Society	Cancer Facts and Figures for Hispanics/Latinos	Unsure of current data on cancer for Hispanic/Latino patients? This reference from @AmericanCancer provides helpful info at a glance: http://bit.ly/2GjaMeO #TAPResource #MinorityCancer
American Medical Association	Reducing Disparities in Health Care	We all want to reduce health disparities, but what can physicians do? This useful list of resources is a great place to start: http://bit.ly/2E2sb9q #TAPResource
Association of Community Cancer Centers	2018 Patient Assistance and Reimbursement Guide	How can you help patients navigate issues like insurance and generics? This guide can help: http://bit.ly/2pO4GMr #TAPResource
Association of Community Cancer Centers	Ethnic Diversity and Cultural Competency in Cancer Care	Improve your cultural competency by using these tools: http://bit.ly/2GcoAvs #TAPResource #MinorityCancer
BMC Medical Education	Development/Evaluation of a Web-Based Breast Cancer Cultural Competency Course for Primary Healthcare Providers	What are best practices for developing online training modules for physicians? This case study provides some answers: http://bit.ly/2pJxBRI #TAPResource #MinorityCancer #BreastCancer
Cancer Patient Education Network	Health Literacy Action: Toolkit for Patient Educators	Empower patients with this toolkit for patient educators: http://bit.ly/2GfJVnR #TAPResource
Center for Healthy Families and Cultural Diversity	Clinical Cultural Competency Questionnaire (Pre-Training Version)	Assess your knowledge of cultural competence with this survey designed for physicians http://bit.ly/2ussvib #TAPResource
Cigna	Commonly Used Spanish Patient Forms: Consent, Refusal, Instruction and Treatment	Ensure you have all the necessary tools to provide the best care to Spanish speakers with these common patient forms in English and Spanish: http://bit.ly/2GBDtXT #TAPResource #MinorityCancer
Cigna	Repository of Cultural Competency Training and Resources	Having a hard time finding cultural sensitivity training material? This repository from @cigna can help: http://bit.ly/2IXKa4J #TAPResource

Publisher	Provider Resource	Tweets
Department of Health and Human Services, US Food and Drug Administration, Department of Justice	Part 1: Breaking Down the Language Barrier - Translating Limited English Proficiency into Practice	Language barriers can make it difficult to communicate with and care for patients. This video has practical tips for overcoming this issue: http://bit.ly/2GAM38Y #TAPResource #MinorityCancer
EthnoMed	Cultural Profile: Hispanic/Latino	How can you best care for your Hispanic/Latino patients? This is a good place to start: http://bit.ly/2MnLiQJ #TAPResource
Georgetown University National Center for Cultural Competence	A Guide to Planning and Implementing Cultural Competence: Organizational Self-Assessment	Know where your organization stands on cultural competency with this useful self-assessment: http://bit.ly/2GylLTO #TAPResource
Georgetown University National Center for Cultural Competence	Cultural and Linguistic Competence Health Practitioner Assessment	Want to learn how to better care for your diverse group of patients? Check out this online module from @NCCCCGeorgetown: http://bit.ly/2DZdbJm #TAPResource #MinorityCancer
Georgetown University National Center for Cultural Competence	Cultural and Linguistic Competence Health Practitioner Assessment	Improve your personal awareness of cultural competency with this survey http://bit.ly/2pLzOVy #TAPResource
Georgetown University National Center for Cultural Competence	Distance Learning Opportunities	Providers: Distance learning opportunities from @NCCCCGeorgetown can help you learn more about cultural sensitivity: http://bit.ly/2E2HkI8
The George Washington University Cancer Center	Addressing the Need for LGBTQI-Affirming Care: A Focus on Sexual and Gender Minority Prostate Cancer Survivors	#DYK that sexual and gender minority #ProstateCancer patients may have unique health needs? This guide from @GWCancer can help you provide culturally sensitive, affirming care for all your patients: http://bit.ly/LGBTQIPrCaCareGuide #TAPResource
The George Washington University Cancer Center	I Want You to Know Patient Cards	What's important to know about your patients? This "I Want You to Know" card can help you start the conversation (available in English, Spanish and Chinese): http://bit.ly/TEAMPatientCards #TAPResource #LGBTQ #MinorityCancer
The George Washington University Cancer Center	Practice Patient-Centered Care Poster	How can you do your part to promote culturally affirming, equitable care? This poster has some helpful reminders: http://bit.ly/TEAMProviderPosters #TAPResource #LGBTQ #MinorityCancer
The George Washington University Cancer Center	You Are Welcome Here Poster	Remind patients of all backgrounds, national origins and identities that they are welcome in your organization: http://bit.ly/YouAreWelcomePosters #TAPResource #LGBTQ #HealthEquity
GLMA: Health Professionals Advancing LGBT Equality	Cultural Competence Webinar Series: Quality Healthcare for Lesbian, Gay, Bisexual & Transgender People	Providers: This webinar series on caring for #LGBTQ patients has great info on caring for sexual and gender minority patients: http://bit.ly/2Ic1qIJ #TAPResource

Publisher	Provider Resource	Tweets
GLMA: Health Professionals Advancing LGBT Equality	Guidelines for Care of Lesbian, Gay, Bisexual and Transgender Patients	Unsure of current guidelines for #LGBTQ patients? This guide can help: http://bit.ly/2IYpPMu #TAPResource
GLMA: Health Professionals Advancing LGBT Equality	Guidelines for Care of Lesbian, Gay, Bisexual, and Transgender Patients	Unsure about current guidelines for the care of #LGBTQ patients? These resources from @GLMA_LGBTHealth are a great place to start: http://bit.ly/2pLBg2h #TAPResource
Health Care Interpreter Network	Qualified Interpreting for Quality Health Care: A Training Video for Clinical Staff on How to Work with Interpreters	This video is specifically designed to help health care workers work with interpreters: http://bit.ly/2pLoFMr #TAPResource
Institute for Health Promotion Research	A Patient Navigator Manual for Latino Audiences	This manual is designed for Patient Navigators caring for Hispanic/Latino patients http://bit.ly/2pNXuRd #TAPResource
Institute for Health Promotion Research	Clinical Trials Outreach for Latinos: Program Replication Manual	Hispanics/Latinos are underrepresented in clinical trials. This clinical trials outreach program manual can help you reverse the trend: http://bit.ly/2J3Uw3a #TAPResource #MinorityCancer
Intercultural Cancer Council	Cancer Fact Sheets	Numerous factsheets for minority populations throughout the cancer continuum found here: http://bit.ly/2GCxAcQ #TAPResource #MinorityCancer
The Joint Commission	Advancing Effective Communication, Cultural Competence, and Patient- and Family-Centered Care: A Roadmap for Hospitals	How can hospitals advance effective communication and cultural competence? This roadmap can help: http://bit.ly/2GjXzIS #TAPResource
LGBT HealthLink	LGBT Best and Promising Practices Throughout the Cancer Continuum	Interested in best practices for #LGBTQ patients throughout the cancer continuum? Start here: http://bit.ly/2GjV2rZ #TAPResource
National Academies of Sciences, Engineering, and Medicine	Health Insurance and Insights from Health Literacy: Helping Consumers Understand: Proceedings of a Workshop - In Brief	This useful report helps start the conversation with patients on navigating the health insurance landscape http://bit.ly/2GAFxiv #TAPResource #HealthLiteracy
National Association of Social Workers	A Guide for Understanding, Supporting and Affirming LGBTQI2-S Children, Youth and Families	As a health care provider, you want to support and affirm all your patients. This guide for LGBTQI2-S youth is a great place to start: http://bit.ly/2GAUCR9 #TAPResource #LGBTQ
National Cancer Institute	Breast Cancer Risk Assessment Tool	How can your patient assess their risk for #BreastCancer? This useful tool is a good place to start: http://bit.ly/2IecONY #TAPResource

Publisher	Provider Resource	Tweets
National Cancer Institute	The Witness Project	The Witness Proejct aims to reduce the burden of mortality and morbidity of African Americans from cancer. More information can be found here: http://bit.ly/2E2IDYo #TAPResource #MinorityCancer
National LGBT Health Education Center	National LGBT Health Education Center: Learning Modules	Are you currently providing care for #LGBTQ patients? These learning modules cover a range of topics, and many provide free CE: http://bit.ly/2lbnblp #TAPResource
Office of Minority Health	A Physician's Practical Guide to Culturally Competent Care	Looking to make your practice more culturally sensitive? These resources from @MinorityHealth can help: http://bit.ly/2Gfnq2c
Office of Minority Health	Cultural Competency Program for Oral Health Professionals	Oral health practitioners: #DYK there's an online cultural sensitivity training made specifically for you? http://bit.ly/2Gd12H3 #TAPResource
Office of Minority Health	Culturally Competent Nursing Care: A Cornerstone of Caring	Learn more about cultural sensitivity in nursing care with this online training: http://bit.ly/2pJ9XFQ #TAPResource
Office of Minority Health	Guide to Providing Effective Communication and Language Assistance Services	Ensure your patients get all the information they need with this guide on effective communication: http://bit.ly/2pRhbXI #TAPResource
Office of Minority Health	Improving Data Collection for the LGBT Community	This factsheet helps improve data collection for #LGBTQ patients. Download it today: http://bit.ly/2GEIaOJ #TAPResource
UCLA Health	Interpreter Services	Health interpreters are important, this quick video explains why http://bit.ly/2J00C4p #TAPResource
University of South Florida College of Behavioral and Community Studies	Cultural & Linguistic Competence (CLC) Resource Library for Eliminating Behavioral Health Disparities	A useful guide on linguistic and cultural competence http://bit.ly/2GxVJ47 #TAPResource #MinorityCancer
Young Survival Coalition	Educational Materials for Providers	This kit from @YSCBuzz is specifically designed for health care providers but also contains useful information for patients. Check it out: http://bit.ly/2GjiMfy #TAPResource #BreastCancer

REFERENCES

- Centers for Disease Control and Prevention (2015). *CDC Social Media Tools*. Retrieved from <http://www.cdc.gov/socialmedia/tools/index.html>
- Centers for Disease Control and Prevention (2018). *Culture and Health Literacy*. Retrieved from: <https://www.cdc.gov/healthliteracy/culture.html>
- Centers for Disease Control and Prevention (n.d.). *SocialMediaWorks*. Retrieved from <https://cdc.orau.gov/healthcommworks/Account/LogOn?signInArea=SocialMediaWorks#1>
- Fox, S. (2014, January 15). The social life of health information. *Fact Tank: News in the Numbers*. Retrieved from <http://www.pewresearch.org/fact-tank/2014/01/15/the-social-life-of-health-information/>
- Hootsuite (n.d.). *Health care: The 4-step guide to driving greater patient engagement*. Retrieved from <https://hootsuite.com/resources/guide/health-care-guide-driving-patient-engagement>
- Pew Research Center. (2017). *Social media fact sheet*. Retrieved from <http://www.pewinternet.org/fact-sheets/social-networking-fact-sheet/>
- Twitter Government and Elections Team. (2014). *The Twitter government and elections handbook*. Retrieved from <https://g.twing.com/elections/files/2014/09/16/TwitterGovElectionsHandbook.pdf>
- U.S. Department of Health and Human Services (n.d.). *Quick guide to health literacy*. Retrieved from <http://health.gov/communication/literacy/quickguide/factsbasic.htm>